

WEEKLY EQUITY
REPORT 19-23
SEP:2016



2016

Top Stories of This Week

Domestic Market News:-

Equity benchmarks closed higher for third consecutive session but were off day's high due to some profit booking in afternoon trade.

Economical News

Finance Minister Arun Jaitley expressed hope that the Reserve Bank will keep in mind the decline in retail inflation while deciding on interest rates at its policy review meeting on October 4.

World Market News

Asian stocks rose after weak US data reduced the chance of an interest rate increase by the Federal Reserve at next week's meeting.

The MSCI Asia Pacific Index rose 0.6 percent to 137.35 as of halting a six-day run of declines and paring this week's loss to 2.1 percent.

European shares slid as a \$14 billion U.S. Justice Department claim against Deutsche Bank AG and weakening oil prices dragged lenders and energy companies lower.

Apple Inc. suppliers surged after the iPhone maker climbed to its highest since December in the U.S. amid growing optimism over the iPhone 7's market reception

American factories cut back output by the most since March in August 2016, signaling underlying softness in the US manufacturing sector, which accounts for about 12 per cent of the world's biggest economy, making the case for the US Federal Reserve to delay raising interest rates at least until the end of the year.

Weekly Indices Change

Index	Open	Prev. Close	Chg. (%)
SENSEX	28412	28599	0.66
NIFTY	8742	8779	0.43

Top Gainers Weekly

Scrip	Price	% Chg
Den network ltd.	78.20	+9.68
Cox & kings	229.55	+8.43
vakrangi	224	+7.80
Wockhardt ltd	909	+5.97
manappuram	95.15	+5.96

Top Losers Weekly

Scrip	Price	% Chg
Trent ltd.	226	-90.34
Hindpetro	399	-68.04
BEML	920.6	-14.10
HDIL	89.10	-11.74
Uco bank	38.10	-10.77

FII/FPI Activity

Date	Figures in cr.
16-09-16	660.59
15-09-16	345.42
14-09-16	-477.33
12-09-16	-593.61

DII Activity

Date	Figures in cr.
16-09-16	-213.13
15-09-16	-456.91
14-09-16	-8.53
12-09-16	-12.90

Nifty



Support & Resistance

S3	S2	S1	Nifty	R1	R2	R3
8495	8632	8720	8857	8946	9083	9171

Overview: Nifty was volatile in last week and on daily charts its trading above its 50 Days MA. If it breaks its support level of 8725, it may see some correction and touch the levels of 8630-8500 in coming days. However Nifty looks quite bullish on daily charts and 8946 is acting as a good resistance level.

Recommendation: BUY NIFTY FUT ABOVE 8830 TG- 8920-8990 SL-8750.

Bank Nifty



Support & Resistance

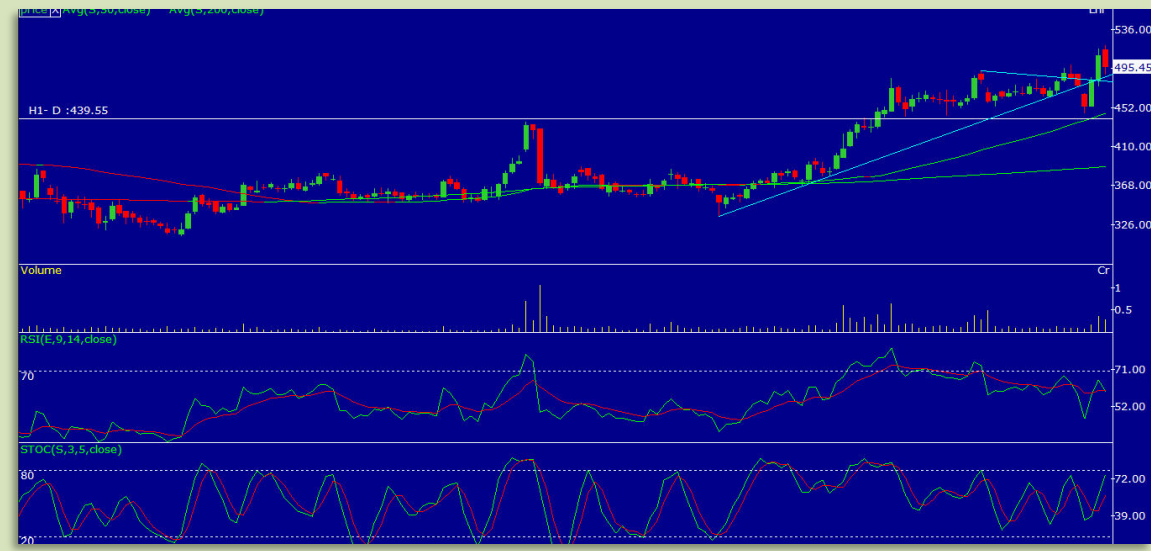
S3	S2	S1	Bank Nifty	R1	R2	R3
19150	19440	19647	19937	20144	20434	20641

Overview: Bank Nifty was volatile in last week and trading near to its support level. 20150 is the key resistance level for upside while on the down side support level is of 19725.

Recommendation: BUY BANK NIFTY FUT ABOVE 20000 TGT 20400-20700 SL-19700

Stock of the week (Equity cash):

SUNTV



Support & Resistance

S3	S2	S1	PIVOT	R1	R2	R3
382	414	454	486	526	558	598

Overview: Suntv was highly bullish in last week and its up trend will continue in coming week also. RSI is above the level of 50 and Stochastic is also showing strength in it. One can initiate long position with SL of 454 TGTs would be 525-555.

Stocks of the week (Equity Future):

AMARAJABAT



Support & Resistance

S3	S2	S1	PIVOT	R1	R2	R3
886	932	970	1016	1054	1100	1138

Overview: Amarajabat was highly volatile in last week and closed above its psychological level of 1000. RSI as well Stochastic also is showing strength in it. One can take long position with SL of 970 and TGT 1055, 1100.

DLF FUTURE-

Support & Resistance

S3	S2	S1	PIVOT	R1	R2	R3
138	141	143	148	150	154	156

Overview: DLF Fut has bounced back after touching the level of 141 and trading above its 50 days DMA. If it manages to sustain above the level of 151, it may move up till the level of 165.

Recommendation: BUY DLF FUT ABOVE 150 SL 143 TGTS 160,165

Week Ahead:

MAJOR RESULTS, BOARD MEETING THIS WEEK:

SKYLINE MILLARS, DEN NETWORKS, GOA CARBON, INFOSYS, HDFC BANK

AGM MEETING THIS WEEK:

COSMO FERRITES, RUBY MILLS, TBZ, PCJEWELLER, BODAL CHEMICLAS.

=====

Disclaimer: The information received by subscribers is for their personal use. Trading involves a great deal of risk, including the loss of all or a portion of your investment, as well as emotional distress. Nothing contained herein should be construed as a warranty of investment results. All risks, losses and costs associated with investing, including total loss of principal, are your responsibility. All information provided or contained in this report is the property of ResearchInn Investment Advisor and should not be reproduced, copied, redistributed, transferred, or sold without the prior written consent of ResearchInn Investment advisor.

